

MCLC Series TRANSDUCER



Features:

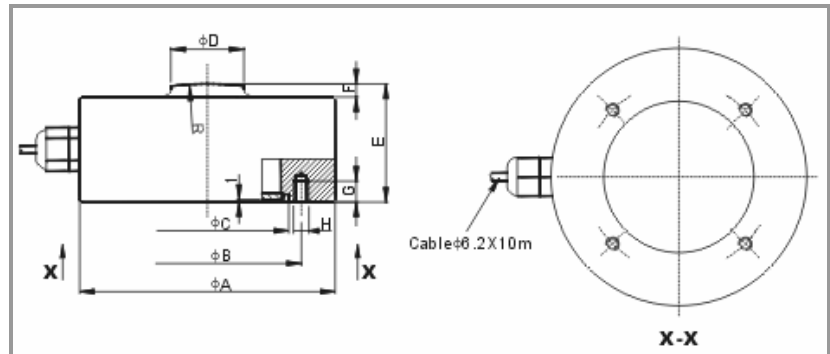
- Simple installation
- Environmentally Protected to IP67

Construction:

- Tool steel construction
- Miniature transducer, spherical surface - with well rejection of side load.
- Weld sealed in bottom, high environment protection.

Application:

Compression, useful for food processing, pharmaceutical, chemical industries and harsh industrial environments where wash down application is needed.



Rated Load	A	B	C	D	E	F	G	H	R
100 kg ~ 2 t	62.0	55.0	36.0	12.0	22.0	4.0	7.0	M5	50.0
5 t	98.0	72.0	62.4	20.0	40.0	5.0	13.0	M6	50.0
10 t	98.0	72.0	62.4	20.0	45.0	5.0	13.0	M6	150.0
20 t	118.0	90.0	62.4	25.0	50.0	7.0	15.0	M8	250.0
30 t	138.0	115.0	62.4	25.0	73.0	8.0	15.0	M10	250.0

Technical Data:

Capacities	100, 200, 500 kg 1, 2, 5, 10, 20, 30 t	
Sensitivity	2.0 ± 1% mV/ V	
Non-Linearity	0.05% FS	
Repeatability	0.03% FS	
Hysteresis	0.05% FS	
Creep (20 Min.)	0.03% FS	
Zero Balance	± 1% FS	
Insulation Resistance	> 2000 MΩ (50 VDC)	
Resistance	Input	400 ± 25Ω (Up to 10t) 7500 ± 30Ω (20t, 30t)
	Output	350 ± 3Ω (Up to 10t) 700 ± 3Ω (20t, 30t)
Temperature Range	Compensated	-10 ~ +60°C
	Operating	-30 ~ +80°C
Temperature Effect	Output	± 0.05% FS/10°C
	Zero	± 0.05% FS/10°C
Maximum Supply Voltage	5 ~ 12V (DC/AC)	
Recommended Supply Voltage	10V (DC/AC)	
Safe Overload	150% FS	
Maximum Overload	300% FS	
Protection Class	IP67	
Cable	Φ5 X 3m	

Haris Sensor Technologies Private Limited

223, Shanti Industrial Estate, Sarojini Naidu Road, Mulund (West), Mumbai - 400080, INDIA.
TeleFax: [+91-22] 2567 2147, 2204, 2205 ◇ E-mail: info@haris.in ◇ Website: www.harissensor.com

